

SAGA²

THE UNIQUE COMFORT LVT

gerflor.com



NEW COLLECTION

Gerflor[®]
theflooringgroup





50x50
cm

Removable /
Installation with Tackifier



Installation over
existing floors*

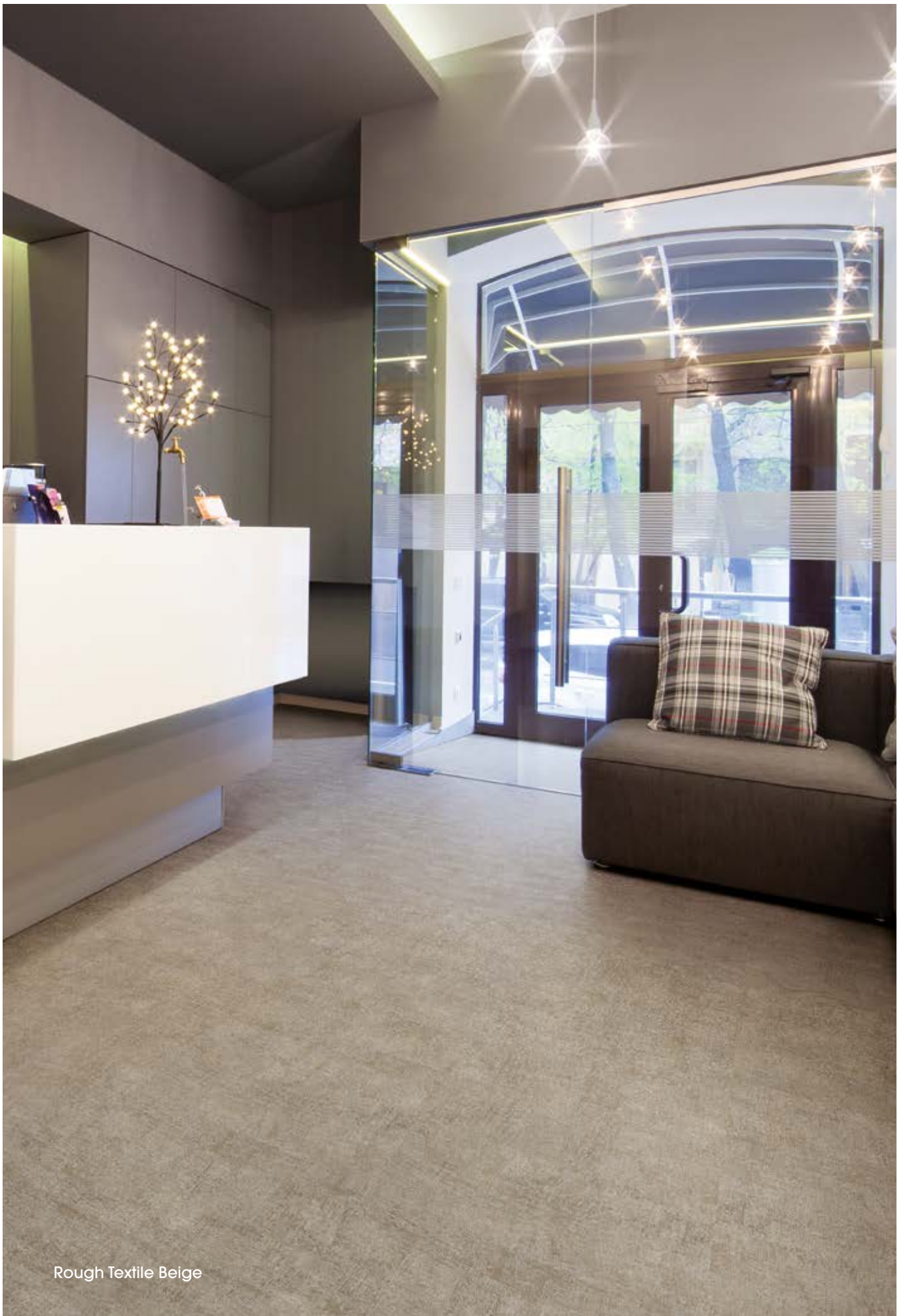


Comfort &
Resistance



<65 dB
-15 dB

Acoustic



Rough Textile Beige



LESS ENVIRONMENTAL IMPACT • MORE COMFORT



COMPOSITION

- **100% REACH** compliant
- **Backing made with cork** (rapidly renewable raw material)
- **FREE** of formaldehyde
- **FREE** of heavy metals
- **FREE** of solvent



INDOOR AIR QUALITY

- **TVOC emissions 10 times better than norms requirements** (TVOC < 100 µg/m³ after 28 days)
- Floorscore® certified
- M1 certified
- Comply with AgBB protocol
- No formaldehyde emission



RECYCLED CONTENT

- **55%** recycled content
- **100% REACH** compliant recycled content



LCA

- **Eco-designed** according to a product specific Life Cycle Analysis
- **Product specific EPD** (Environmental Products Declaration) available
- **Manufactured in an ISO 14001 and ISO 50001 certified site**
- Contribution to many **Green Building Schemes** (LEED, HQE, BREEAM...)



RECYCLABILITY

- **100%** recyclable product



WELLNESS

- **Comfort :**
 - ▶ **Excellent thermal insulator**
 - ▶ **Walking comfort <65 dB** (best certification)
 - ▶ **Impact noise reduction -15 dB**

SAGA²

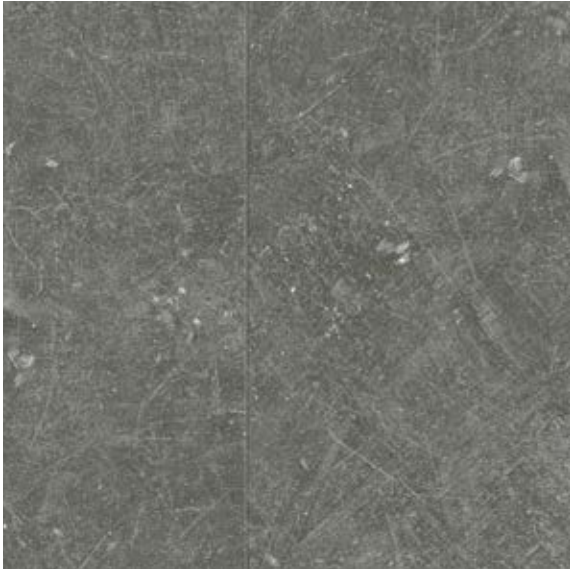
500 x 500 mm | 15 dB | ProtecSol® | 100% recyclable



0021 Barma Sweet



0028 Fiber Silver METAL EFFECT



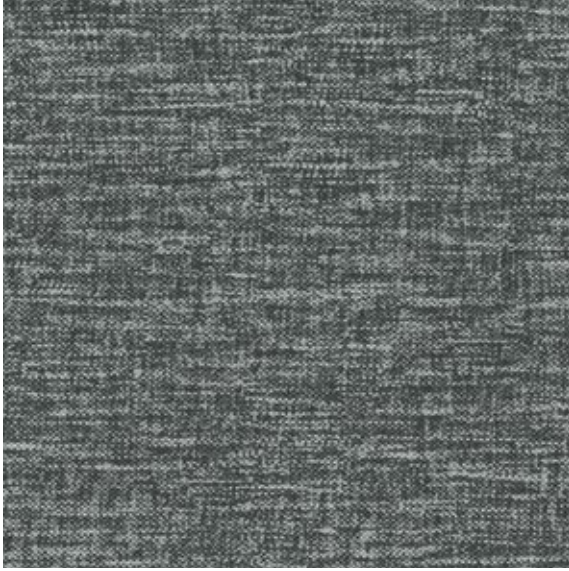
0085 Dock Grey



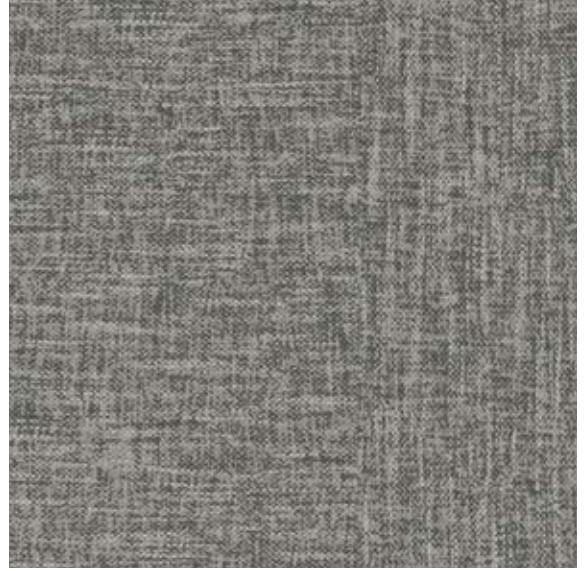
0023 Barma Mystery



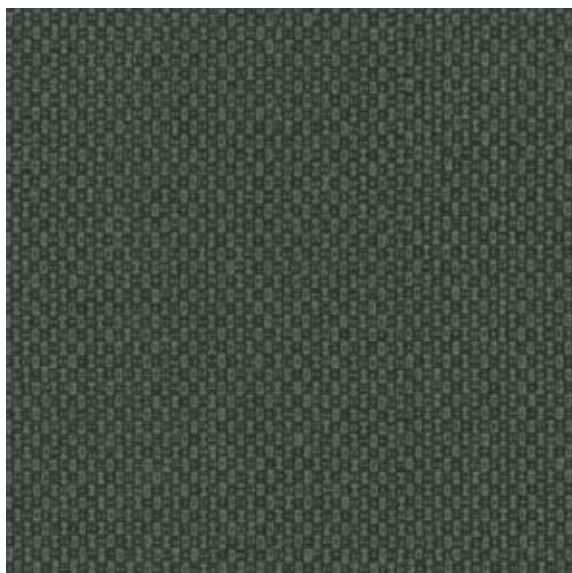
0027 Fiber Heavy Metal METAL EFFECT



0088 Gentleman Grey



0089 Gentleman Taupe



0017 Kadina City



0030 Gentleman Blue

SAGA²



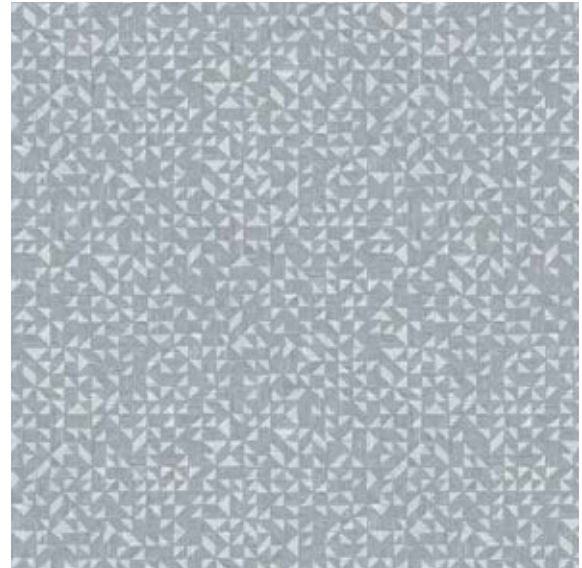
500x500mm

15 dB

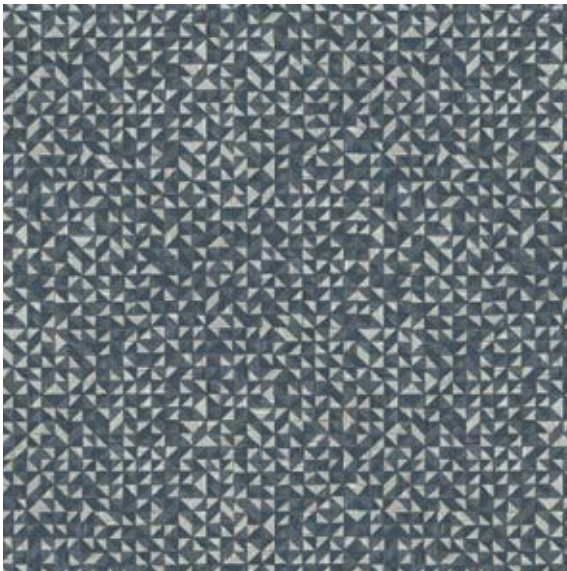
Protocolsol®



100% recyclable



0032 Mozaic Grey



0031 Mozaic Blue



0039 Spider Blue



0063 Rough Textile Grey



0029 Gentleman Beige



0033 Spider Beige



0025 Barma Beige




0026 Fiber Copper **METAL EFFECT**

SAGA²



15 dB

Protocolsol®

 100% recyclable



0035 Spider Taupe



0087 Dock Taupe



0062 Rough Textile Beige





0572 Amarante Dark



0577 Albion



0579 Amarante



DESIGN SHADE VARIATION



Light



Medium

DESCRIPTION / BESCHREIBUNG / BESCHRIJVING / DESCRIPTION / DESCRIPCIÓN / DESCRIÇÃO / DESCRIZIONE / BESKRIVNING / BESKRIVELSE

Total Thickness / Gesamtdicke / Totale dikte / Épaisseur totale / Espesor total / Espessura total / Spessore totale / Total tjocklek / Total tykkelse	EN ISO 24346 (EN 428)	mm	4.60
	ASTM F386-02	inch	0.18
Thickness of the wearlayer / Dicke der Nuttschicht / Dikte van de slijtlaag / Épaisseur couche d'usure / Espesor capa de uso / Espessura camada de desgaste / Spessore strato di usura / Slitskikt tjocklek / Tykkelse slitesjikt	EN ISO 24340 (EN 429)	mm	0.70
	ASTM F410-02	inch	0.03
Weight / Flächengewicht / Gewicht / Poids / Peso / Peso / Vikt / Vekt	EN ISO 23997 (EN 430)	g/m ²	5595
	ISO 24342 (EN 427)	mm	500.5 x 500.5
Size / Format / Afmetingen / Format / Dimensiones / Dimensões / Dimensione / Storlek / Størrelse	ASTM F 536	inch	19.685" x 19.685"
Number of tiles per package / Nombre de dalles par boîte / Cantidad de losetas / Caja	-	-	10

CLASSIFICATION / KLASSIFIKATION / CLASSIFICATIE / CLASSIFICATION / CLASIFICACIONES / CLASSIFICAÇÕES / CLASSIFICAZIONI / KLASSIFICERING / KLASSIFISERING

Norm/Product Specification / Produktnorm / Technische eigenschappen / Norme/Spécification produit / Normas / Normas / Norma prodotto / Norm/Produktspecification / Norm	-	-	EN 652
	ASTM F 1700-04	-	Class III Type B
European Classification / Europäische Klassifizierung / Europese classificatie / Classement européen / Clasificación europea / Classificação Europeia / Europea / Europaklass / Europaklasse	EN ISO 10874 (EN 685)	Class	34-42
Classement UPEC	-	-	U4P3E2C2
Avis technique	-	n°	12/13-1655
Sonorité à la marche / Gehrschall	NFS 31 074	dB	< 65
	EN 13 501-1	Class	Bf1-s1
Fire Rating / Brandverhalten / Brand classificatie / Classement Feu / Fuego / Fogo / Reazione al fuoco / Brandklassificering / Brannklassifisering	ASTM E648-08	Class	1
	CAN/ULC S102.2	-	-
Static Electrical Propensity / Begehaufadung / Elektrische eigenschappen / Potentiel de charge / Comportamiento electrostático / Comportamento electrostático / Resistenza elettrica / Elektrisk oppladning / Elektrostatisk oppladning	EN 1815	kV	< 2
Slip Resistance Wet / Rutschhemmung / Anti-slip / Glissance humide / Deslizamiento húmedo / Escorregamento húmido / Scivolosità umida ⁽¹⁾ / Friktion / Friksjon, våt	DIN 51130/BGR 181	Class	R9 - R10 ⁽²⁾

PERFORMANCES / TECHNISCHE EIGENSCHAFTEN / TESTRESULTAAT / PERFORMANCE / CUALIDADES TÉCNICAS / PERFORMANCES / CARATTERISTICHE TECNICHE / TESTVÄRDEN / TESTVERDIER

Wear Resistance / Verschleißverhalten / Slijtvastheid / Résistance à l'usure / Abrasión / Abrasão / Resistenza all'abrasione / Slitagemotstånd / Slitestykke	EN 660.2	mm ³	≤ 2.0
Wear Group / Verschleißgruppe / Groep slijtvastheid / Groupe d'abrasion / Grupo de abrasión / Grupo de abrasão / Gruppo di abrasione / Slitklass / Slitasjegruppe	EN 652	group	T
Dimensional Stability / Maßstabilität / Maatvastheid / Stabilité dimensionnelle / Estabilidad dimensional / Estabilidade dimensional / Stabilità dimensionale / Dimensionsstabilitet / Dimensjonsstabilitet	EN ISO 23999 (EN 434)	%	≤ 0.15
Residual Indentation / Resteindruck / Indrukbelasting / Poinçonnement statique rémanent / Punzonamiento / Punçoamento / Impronta / Intrycksbeständighet / Intrycksfasthet	EN ISO 24343-1 (EN 433)	mm	< 0.13
Castor chair test / Stuhlrollenbeanspruchung / Rolweerstand bureaustoelen / Essai de la chaise à roulettes / Determinación del efecto de una silla con ruedas / Resistencia a cadeiras de rodas / Resistenza al passaggio di sed / Tålighet mot rullande stolshjul / Rullende stolshjul (Type W)	ISO 4918 (EN 425)	-	OK
Impact sound insulation / Trittschallverbesserungsmaß / Geluidsisolatie / Isolation acoustique bruits de chocs / Acústica / Isolamento acústico / Stegljuddämpning / Trinnylidsdemping	EN ISO 717-2	dB	15
Impact insulation class (IIC)	ASTM E492	dB	IIC - 58dB
Thermal Conductivity / Wärmeleitfähigkeit / Thermische weerstand / Conductivité thermique / Conductividad térmica / Contutividade térmica / Resistenza termica / Värmeledningsmotstånd / Värmemotstånd	EN ISO 10456 (EN12524)	W/(m.K)	0.25
Colour Fastness / Lichtechtheit / Lichtechtheid / Solidité lumière / Resistencia a la luz / Estabilidade das cores / Solidità alla luce / Färgbeständighet / Fargebestandighet	EN 20 105 - B02	degree	≥ 6
Surface Treatment / Oberflächenvergrütung / Oppervlaktebehandling / Traitement de surface / Tratamiento de superficie / Tratamento de superficie / Trattamento di superficie / Ytbehandling / Overflatebehandling	-	-	Protocols®
Chemical Products Resistance / Verhalten gegenüber Chemikalien / Chemische bestendigheid / Résistance aux produits chimiques / Resistencia a los productos químicos / Resistência aos produtos químicos / Resistenza ai prodotti chimici / Kemikaliebestandighet / Kjemikaliebestandighet	EN ISO 26987 (EN 423)	-	OK / Beständig gegenüber nicht färbenden alkoholhaltigen Handdesinfektionsmitteln, Haushaltschemikalien und verdünnten Säuren und Laugen bei kurzzeitiger Einwirkung

ENVIRONMENT/INDOOR AIR QUALITY / UMWELT/RAUMLUFTQUALITÄT / ENVIRONNEMENT/QUALITE DE L'AIR INTERIEUR / MEDIO AMBIENTE/CALIDAD INTERIOR DEL AIRE INTERIOR / MEIO AMBIENTE/QUALIDADE DO AR INTERIOR / INNOMHUSLUFT / EMISJONER

TVOC after 28 days / TVOC (28 Tage) / TVOC (28 dagen) / TVOC après 28 jours / TVOC (28 dias) / TVOC (28 dias) / TVOC (28 giorni) / TVOC (28 dagar) / TVOC (28 dager)	ISO 16000-6	µg/m ³	< 100
Certification / Zertifikat / Certification / Certificado / Certificado / Certifikat / Sertifisering	-	-	Floorscore®

CE MARKING / CE KENNZEICHNUNG / EG_CONFORMITEITSMERK / MARQUAGE CE / MARCA DE CONFORMIDAD CE / MARCA DE CONFORMIDADE CE / MARCATURA CE DI CONFORMITA / CE-MÄRKNING / CE MARKING

	EN 14041	-	
--	----------	---	--

(1) Ramp test with oil / Schiefe Ebene / Plan incliné avec huile

(2) Glissance humide / Slip resistance wer / Rutschhemmung : details sur site gerflor.com / details on website gerflor.com / Einzelheiten auf der web-site gerflor.com

SAGA²: LESS SPEAKING FOR MORE ACTIONS

COMPOSITION 100% REACH Cork Backing	INDOOR AIR QUALITY 10 times better than norms requirements (TVOC < 100µg/m ³ after 28 days) No formaldehyde emission	RECYCLED CONTENT 55%	RECYCLABILITY 100%	LIFE CYCLE ANALYSIS Eco-designed according to a product specific Life Cycle Analysis	WELLNESS Comfort : Walking comfort <65dB (best certification) Impact noise reduction -15 dB

IMPORTANT: The information contained in this document is valid from 01/05/2017 and is subject to change at any time without notice. In the context of constantly changing technology, our customers are responsible, prior to any use, for checking with us that this document is the version in force.

IMPORTANT : Les informations contenues dans ce document sont valables à compter du : 01/05/2017 et susceptibles d'être modifiées à tout moment et sans préavis. L'évolution de la technique étant permanente, il appartient à notre clientèle avant toute mise en œuvre, de vérifier auprès de nos services que le présent document est bien celui en vigueur.

FRANCE: Gerflor Service Express

N°Azur 0 810 569 569 N°Azur FAX 0 810 569 570

e-mail: contactfrance@gerflor.com

OTHER COUNTRIES: Gerflor International

Tel: +33 (0)4 74 05 40 00 - Fax: +33 (0)4 74 05 03 13

e-mail: gerflorcontract@gerflor.com